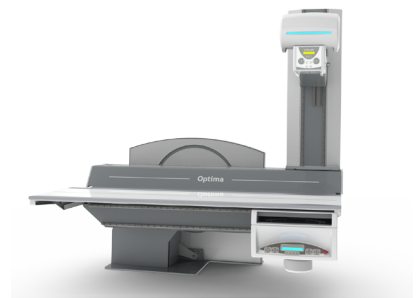
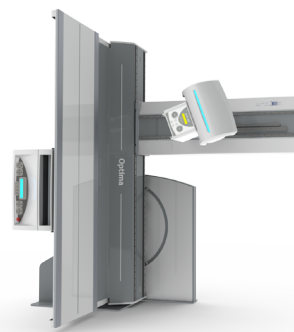
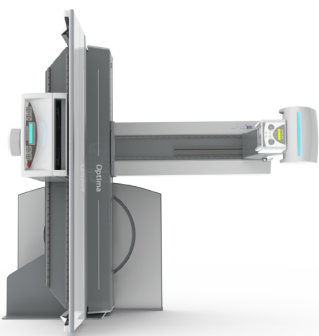




 **Optima**  
Designed for efficiency



**Key features**

- Long table top (240 cm) for optimal patient coverage
- Excellent motion control with ultra silent brushless motors
- Fully motorized tube rotation
- Unlimited auto-positioning linked to the APR
- Remote control access to the table through VPN easy service
- Innovative tilt/shift movement allowing 79 cm
- SID up to 180 cm

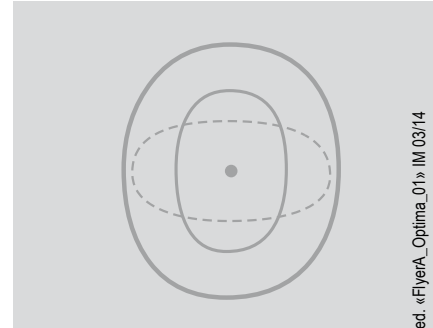
## → Designed for performance.

### Maximum exam capability:

- With a **+90°/-30° motorized tilting table**, the Optima performs *all types of R/F examinations*
- The **180 cm SID** offers necessary precision for lung and stitching exams
- Optimal patient coverage (**195 cm in standard** version and > 270 cm with 4-way table top option)
- Fully motorized tube rotation

### Flexible configurations: one table 3 solutions

- Fully dRF with 43\*43 cm flat panel detector
- Hybrid DR RAD + Image Intensifier
- Conventional CR or cassettes with Image Intensifier
- Designed for seamless upgrade



## → The most comfortable diagnostic experience for the patient

- For **all types of patients**: The Optima can easily support a patient weighing up to 230 kg\*.
- Relaxing: An ambient light and music selection help put the patient at ease during routine exams or special procedures.
- Constant patient contact: A **video camera** encased in the LED collimator provides an extra tool for positioning with absolutely **no dose**, and ensures that the medical team is in constant contact with patients.

## → The highest technology available on a remote-controlled table.



Fully integrated console including generator control

### Based on the same control panel platform as the Platinum to ensure:

- **Optimal flexibility**: The Optima's control system is piloted by the latest intelligent processor control that permit fast and efficient configurations of the table for all exams. The table can also be accessed remotely for quick interventions if necessary.
- **Optimal workflow**: Even in the conventional configuration, the Optima features auto-positioning linked to the APR and synchronized simultaneous movements in all axes.
- **Optimal security**: The entire system was designed to meet the most demanding requirements of quality standards. For example, intelligent 3D software enables perfect patient positioning inside the exam room.

## → Common platform with the Platinum.

The Optima is based on exactly the same advanced technology as the Platinum. This means that all installation, servicing and applications training is exactly the same for both systems. If you know how to run one system, you know how to run both!



Apelem DMS Group - 393 rue Charles Lindbergh - 34130 Mauguio - FRANCE  
Tel: +33 (0)4 67 83 57 58 - [www.apelem.com](http://www.apelem.com)

\*please refer to the Optima Technical Data for precise weight information